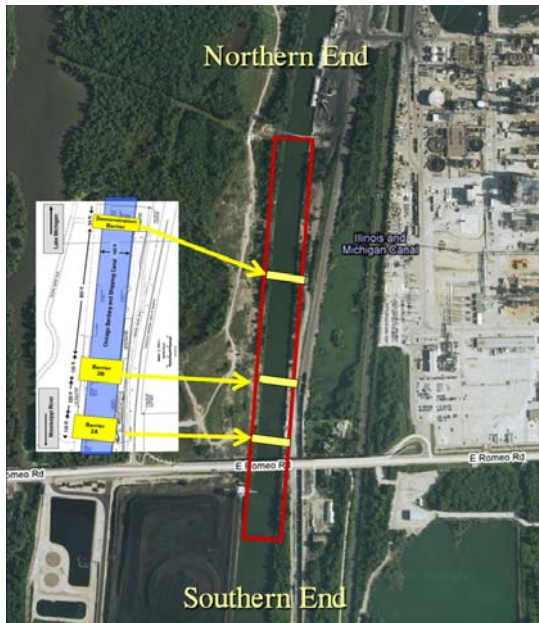


TRANSIT AREA AT OWN RISK

WATER IN THE VICINITY OF THE AQUATIC NUISANCE SPECIES DISPERSAL BARRIER IS ELECTRIFIED!

SERIOUS INJURY OR DEATH POSSIBLE



Aerial view of the Chicago Sanitary Ship Canal and the U.S. Army Corps of Engineers' Aquatic Nuisance Species Dispersal Barrier, located in Romeoville, IL

For the most recent information on Coast Guard regulations and the waterway status, contact Sector Lake Michigan at:
(414) 747-7182;
or visit:

<http://AsianCarp.us/>

Scan for more info



For information on the U.S. Army Corps of Engineers' Aquatic Nuisance Species Dispersal Barriers, contact the U.S. Army Corps of Engineers at:
(312) 846-5330;
or visit:

www.lrc.usace.army.mil/



WATERWAY NOTICE

March 2012



Chicago Sanitary Ship Canal

The Chicago Sanitary Ship Canal, in the vicinity of mile-marker 296, near Romeoville, Illinois, remains **closed** to the following types of vessels:

- ALL VESSELS UNDER 20-FT
- ALL PERSONAL WATERCRAFT
- ALL NON-POWER DRIVEN VESSELS

Such as: - Sailboats w/o motors
- Canoes
- Kayaks
- Rafts
- Shells

<http://AsianCarp.us/>

DESCRIPTION OF HAZARD

To prevent Asian carp from entering Lake Michigan, the U.S. Army Corps of Engineers installed a Fish Barrier near Romeoville, IL, which produces an electric field in the waters of the Chicago Sanitary & Ship Canal. This electrical field is dangerous to persons and property on board vessels.

BALLAST AND DISCHARGE REGULATIONS

All vessels are prohibited from carrying water attained from one side of the barrier and discharging that same water, in any form, within or on the other side of the barrier. This applies to vessels north- and south-bound. Vessels intending to discharge water must request permission from the Captain of the Port Sector Lake Michigan prior to transiting.



REQUIREMENTS FOR TRANSIT OF RECREATIONAL VESSELS OVER 20FT

1. Comply with all directions from the Coast Guard's on-scene representative when present
2. If personnel must be on open decks, they must wear a Coast Guard approved Personal Floatation Device
3. All vessels must maintain headway and no loitering is allowed in the area
4. Do not fish, drag, or disturb the bottom of the canal near the Fish Barrier
5. All personnel should remain inside the cabin or as far inboard as possible
6. Do not moor or lay up on the banks near the Fish Barrier

CAUTION

The water near the barrier is electrified. Contact with this water or conductive materials on your vessel that may be in contact with the electrified water, may cause serious injury or death.

The effect the electrified water may have on medical apparatuses, such as pacemakers, remains unknown.

There is no identified safe method to recover a victim from the water while in the electrified zone. If a person or object falls out of your vessel, the U.S. Coast Guard will not attempt a rescue until the person is 450ft down river of the East Romeo Road Bridge, due to electric hazard for the rescuers.

SAFETY RECOMMENDATIONS FOR RECREATIONAL VESSELS OVER 20FT

1. Remain seated;
2. Avoid contact with metal objects aboard the vessel, except for those necessary to safely navigate through the Fish Barrier;
3. Avoid contact with any water inside the vessel;
4. Avoid making contact with anything outside the hull of the vessel (such as canal walls, water, other vessels, or a person in the water) either directly or through the use of equipment (such as paddles or boat hooks);
5. If your vessel becomes disabled while inside the barrier, allow your vessel to float free (bounce off canal walls or other vessels without fending off or paddling) until 450 feet down river of the bridge;
6. If your electronic equipment is not installed properly and grounded, crossing the barrier is likely to result in significant damage.

Violation of a safety zone or Regulated Navigation Area is punishable by a maximum civil penalty of \$40,000 for each violation. A willful violation of the safety zone may also constitute commission of a Class D felony. A Class D felony is punishable by a fine of no more than \$250,000 and/or imprisonment for not more than six years.